



Announcing  
a Suite of Summer Institutes  
for K-12 and College Teachers

■

# COMPUTERS IN WRITING- INTENSIVE CLASSROOMS

■

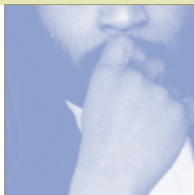
Dr. Cynthia Selfe  
Dr. Anne Frances Wysocki  
Dr. Richard Selfe  
Dr. Gail Hawisher  
Dr. Johndan Johnson-Eilola

■

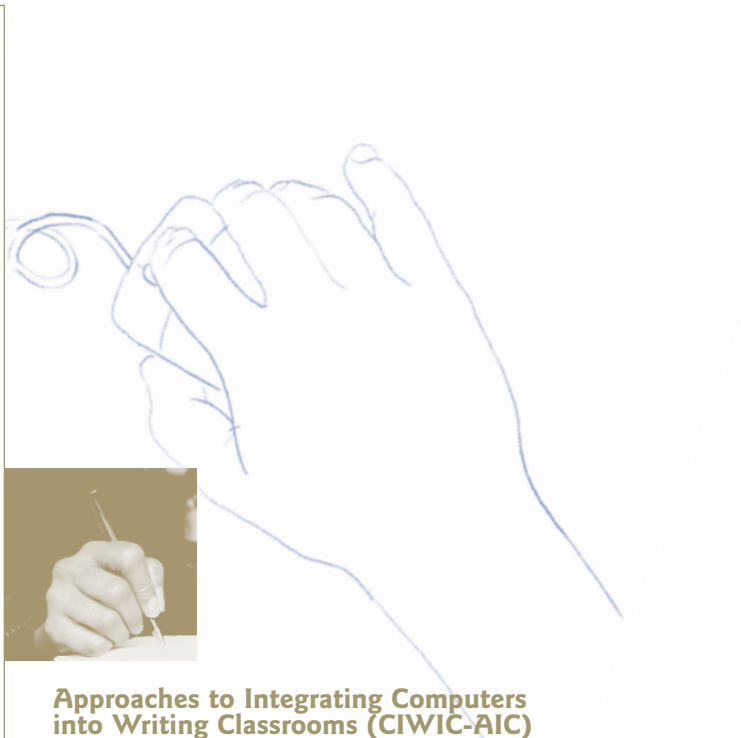
June 1-14, 2005  
Michigan Technological University  
Houghton, Michigan

## our twentieth anniversary year!

For additional details about celebrating with us,  
please contact Erik Hayenga at 906-487-3237 or  
eahayeng@mtu.edu



*"I've never been to a workshop, meeting, conference, or  
class where people have been made to feel more enabled,  
encouraged, and nurtured to work through their ideas."  
— 2000 Participant*



### **Approaches to Integrating Computers into Writing Classrooms (CIWIC-AIC)**

In its twentieth year, CIWIC-AIC offers teachers and scholars innovative approaches to integrating computer technology in meaningful ways within classrooms, programs, and departments. Participants explore how computers can support multiple literacies – alphabetic, visual, and multimodal – in the design of assignments and syllabi, curricula and programs, and computer-based classrooms/facilities.

### **Integrating New Media into Writing Classrooms (CIWIC-NM)**

CIWIC-NM participants learn graphics and authoring software for composing multimedia texts. They also use those texts – as well as student- and commercially-produced multimedia – as grounds for discussing and developing compositional and rhetorical approaches for teaching both the interpretation and the development of new media texts in writing-intensive classrooms.

### **Individual Projects (CIWIC-IP)**

CIWIC-IP is an institute for past CIWIC participants who want to take on a more focused project. CIWIC staff provide intense, one-on-one support.

### **INTERESTED?**

#### **For more information, please contact:**

Alex Ilyasova, Humanities Department  
Michigan Technological University,  
1400 Townsend Drive, Houghton, MI 49931  
Voice: 906-487-3234, Email: kailyaso@mtu.edu

**Or visit <http://www.hu.mtu.edu/ciwic>**